

SOYBEANS

S35-C3_{BRAND}

RM:
3.5



GREAT CHOICE FOR RUGGED, STRESS-PRONE SOILS

- Outstanding stress tolerance
- Superb Sudden Death Syndrome resistance
- Good field tolerance to Phytophthora Root Rot

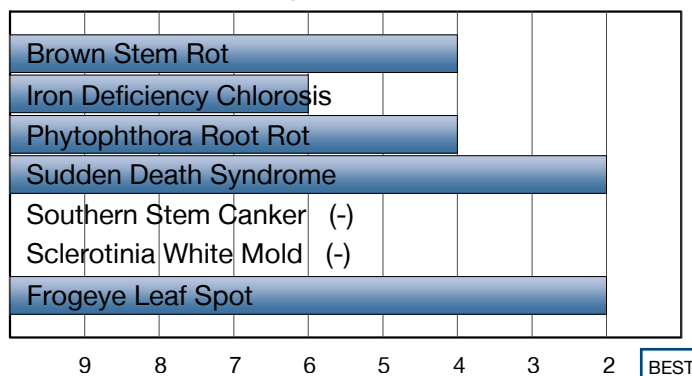
Plant Characteristics

Plant Height	Medium-Tall
Canopy/Plant Type	Medium
Branching	Moderate
Growth Habit	Indeterminate
Flower Color	Purple
Pubescence Color	Light Tawny
Pod Color	Tan
Hilum Color	Black
Chloride Sensitivity	Includer

Agronomic Traits

Emergence	3
Standability	4
Shatter Tolerance	2
Stress Tolerance	2
Green Stem	2
Estimated Seed Size	Medium
% Protein at 13% mst.	35.3
% Oil at 13% mst.	21.0
Narrow Rows	2
Wide Rows	2

Disease Ratings



Adaptation to Soil Types

Drought Prone	★
High pH*	✗
Highly Productive	★
Moderate/Variable Environments	★
Poorly Drained	●
High Salinity	✗

Diseases and Pests

Phytophthora Root Rot (PRR) Source	-
Soybean Cyst Nematode (SCN) Races	R3, MR14
(SCN) Source	PI88788
— Root-Knot Nematode (RKN) —	
Southern -	Peanut - Javanese -

For more information or to view product performance data: www.nk-us.com (800) 258-0521 Or, follow NK on Twitter @SyngentaUS or Facebook (Facebook.com/SyngentaUS).



Ratings are based on interpretation of data gathered by Syngenta and/or observations across areas of adaptation and may change as additional data are gathered.

©2016 Syngenta. NK®, SCN Solutions™, the Alliance Frame and Syngenta logo are trademarks of a Syngenta Group Company. Genuity®, Genuity and Design, Genuity Icons, and Roundup Ready 2 Yield® are registered trademarks of Monsanto Technology LLC used under license. NK Soybean varieties are protected under granted or pending U.S. or Canadian variety patents and other intellectual property rights. Seeds containing the Genuity Roundup Ready 2 Yield trait may be protected under numerous United States and Canadian patents. It is unlawful to save NK soybeans or Genuity Roundup Ready 2 Yield soybeans for planting or transfer to others for use as a planting seed, regardless of the trait(s) within the seed. Follow grain marketing and all other stewardship directions. Details of these requirements can be found in the Syngenta Stewardship Agreement.

1-9 Scale: 1 = Best, 9 = Worst, (-) = Not Available, NA = Not Applicable.

Icon Scale: ★ Best Choice ● Good Choice ▼ Average to Slightly Below Average ✗ Not Recommended

* Represents an assessment of stand establishment, chlorosis severity and yield performance

Published June 21, 2016. For use until July 01, 2017.